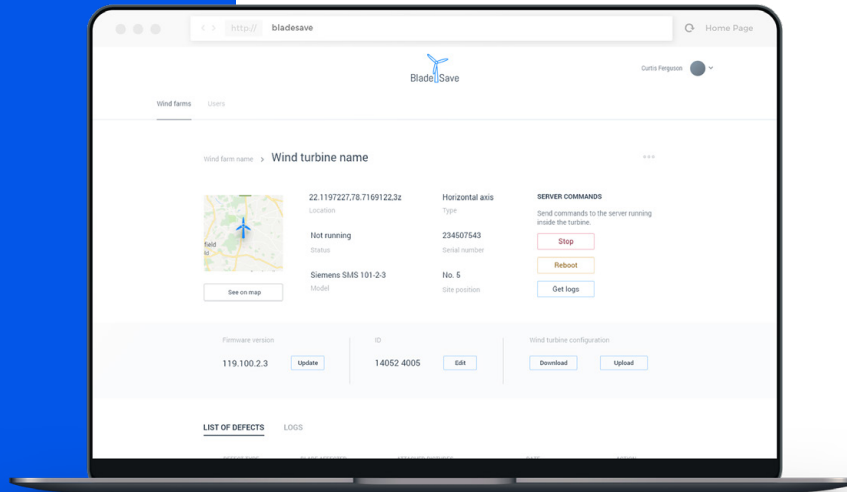


# BACK-END

## Development Portfolio



# About us

ASSIST Software was founded in 1992 and is a software company based in Suceava, Romania. ASSIST Software specializes in outsourcing software development projects.



28 Years of  
Experience



200+ Full-Time  
Employees



240 Clients  
around the world



463 Projects  
Completed since 1992

# Our Expertise

1

## REST Frameworks

When it comes to communication and interfaces, we have a preference for **REST protocols**.

We build flexible architectures and we use **Swagger** for auto-generated documentation.

2

## Scalability

We employ best practices when it comes to scalability. We optimize resource consumption and we have extensive experience in working with large databases and datasets.

We perform stress tests and we scan for bottlenecks.

3

## Microservices

We have experience in architecting, building, and managing complex applications with up to 45 microservices.

We love using Lambda functions whenever it makes sense.

4

### Back-end development frameworks and languages

At ASSIST Software, we provide back-end development services using the latest technologies and frameworks such as **Ruby on Rails**, **Python**, **PHP**, **Node.js**, **Java**, **Scala**, **C#**, **.Net**, and many more.

5

### ISO 25010 compliance

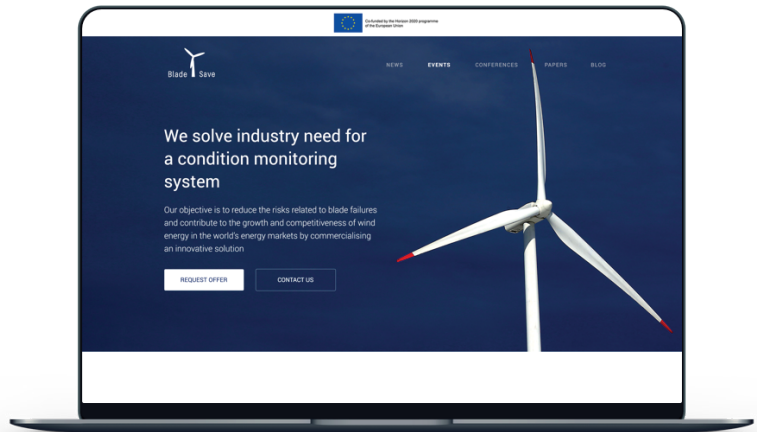
We are developing high-quality back-end platforms that are fully compliant with **ISO 25010** guidelines.

That meet quality standards on a range of characteristics such as functional suitability, performance efficiency, compatibility, reliability, security and maintainability.

# BladeSave

The **BladeSave Project** is co-funded by the **Horizon 2020** program of the European Union and submitted under H2020-FTIPilot-2016 call Innovation Action, on-topic FTIPilot-01-2016.

BladeSave system is a fusion between a Fibre Optic Structural Health Monitoring System (**Smartscan**) providing multi-sensing capability (strains, vibrations, and acoustic emission), and a blade management software (**WindManager**) linking the data from inspection and maintenance to the **SHM data** offering a comprehensive solution for wind turbine blades monitoring, repair, and management.



The main work of this project is to perform a unique functionality: the fusion between the **SHM system**, **Smartscan** and the **WindManager** software to provide a system capable of collecting the data from monitoring, inspections, repairs, and build a risk matrix evaluating the blade health on a 5-grade scale.

ASSIST Software is involved in the development of the communication system and the pre-processing of data to perform system's trials, the software fine-tuning and system demonstrations also will develop the project website, dissemination and promotional materials and support for the market uptake.

[Learn more](#)



**Horizon 2020  
Programme**

### Partners



TWI Ltd.



Renewable Advice



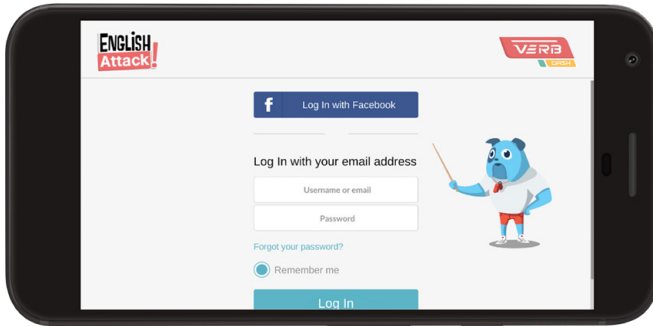
Smart Fibre



ASSIST Software SRL



EWT

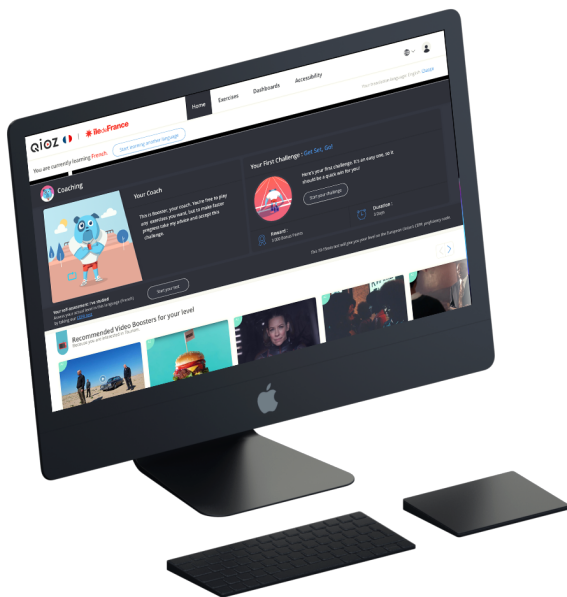


# English Attack

**English Attack!** is the first English-language learning service specifically designed for the digital generation.

We are involved in developing and improving current version of English Attack!. One of our important goals is to optimize the website, increasing its performance by using **CDN** and special caching techniques.

At the same time a set of games have been developed in **Unity 3D game** engine and integrated in the website and as standalone mobile apps.



We improve the overall performance of the website by maintaining a healthy flow of messages to the database with the help of **AMAZON SQS**.

In order to help the users achieve better results, we give them the possibility to hear the pronunciation of the expressions they learn, by using the **iSpeech** service.

For protecting the website and API against common web exploits we use **AWS WAF**, which creates and maintains security rules with the integrated API.

We used **Node.js** and **MongoDB** to develop the new coaching feature of the app.

[Learn more](#)

# HealthPoint

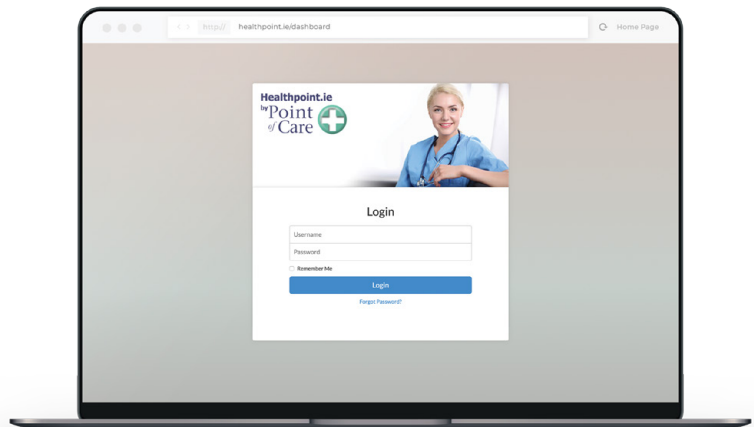
**HealthPoint** is a **Health Management Platform** focused on engaging patients, improving healthcare workflow – targeting treatments, procedures, and training for medical professionals.

Purposefully built as a medical application, HealthPoint boasts features meant to firstly ease the transition of medical personnel into the digital workings of the medical system and secondly to provide services and functionality while in step with medical technology and procedures.

Among the features of HealthPoint, the current way to register and manage Patients has taken a step further, allowing for easy assignment of procedures to be performed by a clinician, scheduling hospital or home visits, all managed by a stable system.

Customized interfaces designed to be built for a particular client of the platform goes a long way towards providing an excellent basis for several of the key services on HealthPoint: Refer a new Patient, Patient Referral Status and Programme Summary, supplemented by full support for **Adverse Event Forms** and **Product Complaint** forms, in step with the latest e-health standards.

[Learn more](#)



# Health Beacon

**Health Beacon** is a medication adherence technology company. They develop smart tools for managing medication. The Health Beacon is a smart sharps bin for patients who self-inject medications at home. It is digitally connected and programmed with your personal medication schedule and uses **customized reminders** to help you start and stay on track with your medication.

ASSIST Software developed a web application for managing the devices, patients and medical staff. The technology used is **Django Python** and the application is directly integrated with the devices firmware.

The application is hosted on **AWS** and is **HIPPA compliant**. The entire cloud architecture is designed and maintained by ASSIST Software in production.

[Learn more](#)



# VALUMICS

The **VALUMICS** project is a Horizon 2020 Research and Innovation project that addresses specific challenges facing the food system and food value chains in Europe.

VALUMICS work aims to improve **understanding** the functioning of different links in the food chain, their viability, and **sustainability** within specific supply chains and across food chains, and how they provide the capacity to foster the sustainability and resilience of the food system.

**ASSIST Software's** role is to build an integrated dynamic simulation model, quantitatively test the model developed, and provide understanding about the drivers and outcomes of behaviors within food value networks, which will enable participants, industry and regulatory policymakers to explore the implications of a wide variety of contractual and regulatory scenarios and interventions for improving resilience, integrity, and sustainability of food value chains.

[Learn more](#)



Food Systems Dynamics



Horizon 2020  
Programme

## Partners

 19 partners from 14 EU countries, and 2 partners from Asia

# Advantages of using our back-end services

Webpage safety

Reporting – generating  
analytics and statistics

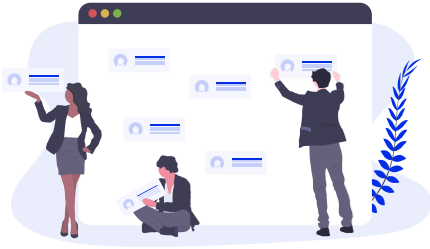
Accesses the information that  
users require

API integration

Combines and transforms  
gathered information

ISO 25010 compliance

# Collaboration Models



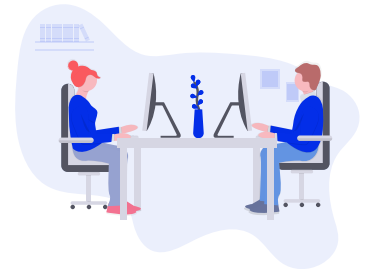
## Project-based

- Clear requirements
- vDynamic team scaling
- Self-managed
- Cost per project



## Dedicated Team

- Clear requirements
- Product Owner
- Fixed Team
- Self-managed
- Milestone-based cost



## Team Augmentation

- Clear requirements
- Product Owner
- Mixed teams
- Shared tools
- Joint ceremonies
- Time/Material



**Digital challenges?**  
**Let us help you!**

[assist-software.net](https://assist-software.net)

**ASSIST**  
Innovative Minds